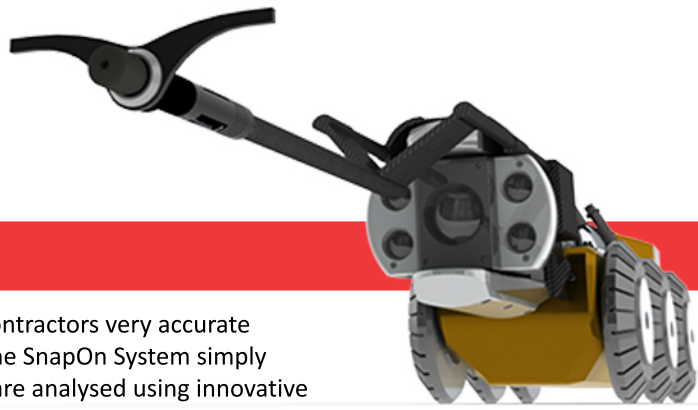


SnapOnProfiler



CUES CAMERAS - SPECIFICATIONS

The Profiler has been developed to provide pipeline engineers and contractors very accurate empirical data on the ovality of new and existing flexible pipelines. The SnapOn System simply attaches to existing CCTV Camera and the resulting CCTV recordings are analysed using innovative 'machine vision' software.

The battery powered units easily attach to specified CCTV camera units from Cues. The Profilers are constructed of high strength carbon fibre and aluminum to withstand the nature of the industry. There are no moving parts within the units making deployment simple and easy.

LASER

Pipe sizes are an estimate provided as a guide only - pipe conditions and crawler configuration can affect the range

			SNAPON		SKID		
			50mW Single	120mW Single	120mW Single	50mW Six Head	
							
NIGHTOWL	Pipe Diameter	Clean/White Dirty/Black	6"-15"	NA	8"-24"	18"-40"	
	Battery Life		6 hours	NA	12 hours	3.5 hours	
	Accuracy		± 0.5%	NA	± 0.5%	± 0.5%	
OZII	Pipe Diameter	Clean/White Dirty/Black	6"-15"	NA	8"-30"	18"-44"	
	Battery Life		6 hours	NA	12 hours	3.5 hours	
	Accuracy		± 0.5%	NA	± 0.5%	± 0.5%	
OZIII	Pipe Diameter	Clean/White Dirty/Black	6"-15"	NA	8"-30"	18"-44"	
	Battery Life		6 hours	NA	12 hours	3.5 hours	
	Accuracy		± 0.5%	NA	± 0.5%	± 0.5%	



SOFTWARE

System	Operating System	Windows 7, Windows 10
	CPU	2GHz or Greater
	RAM	1GB
	Graphics Card	Recommend Dedicated
	Disk Space	1GB
Deliverables	Reports	Ovality, Pipe Size, X-Y Diameter
	Languages	English, Deutsh, Français Canadien Svenska, Magyar, Português, Español, 日本語, العربية, русский язык
	Viewer	Stand alone Freeware
	Exports	PDF, STL, CSV



The information in this publication, including but not limited to textual content and pictures, is provisional, provided for reference purposes only and may be subject to change without prior notice.
SnapOnDatasheet Cues v4.0 - June 2023

